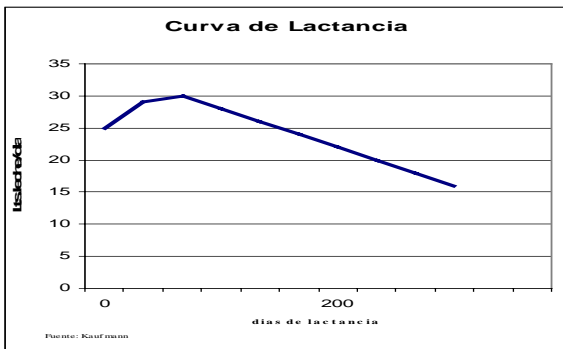


# Análisis de curvas de Lactancias

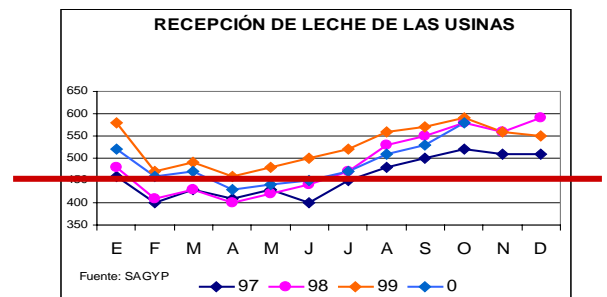
Por J. Esteban Barthalot, M.V.



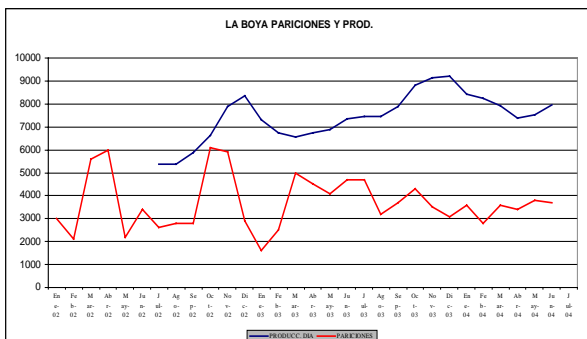
## Curva de lactancia de Libro



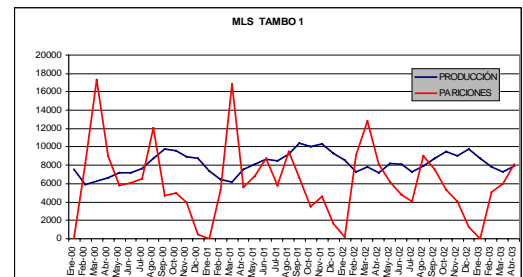
## Recepción de leche de Usinas



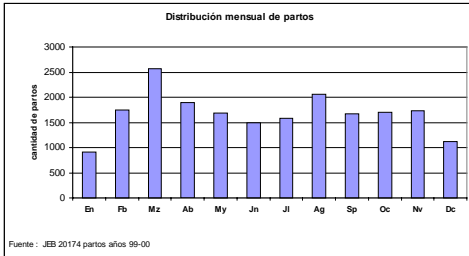
## LB partos vs.producc.



## MLS1 partos vs.producción

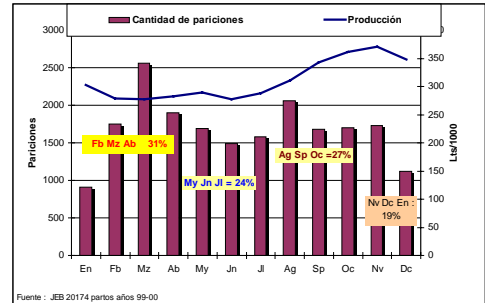


## Distribución de partos

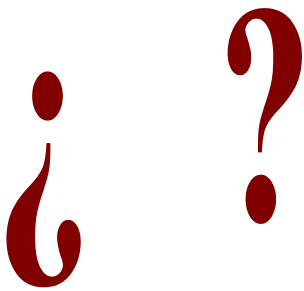


Fuente: JEB 20174 partos años 99-00

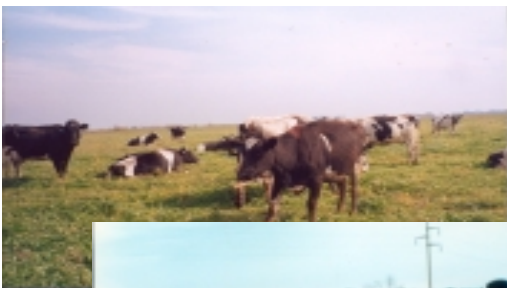
## Partos vs Producción



Fuente: JEB 20174 partos años 99-00

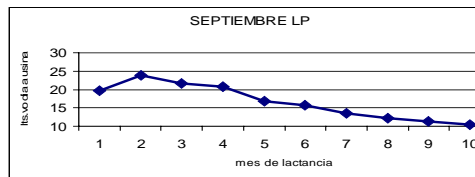
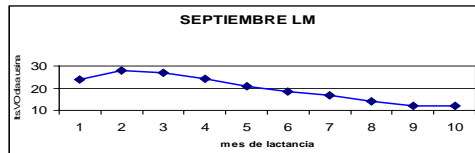
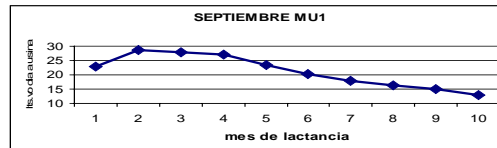
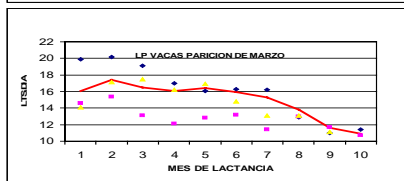
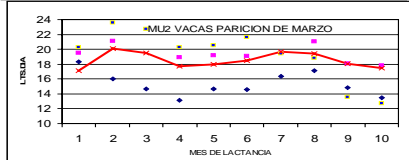
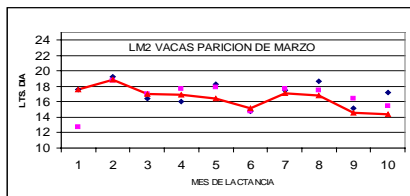


• ARGENTINA

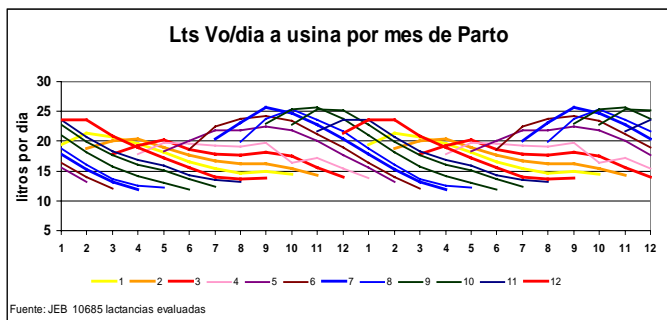


### Planilla toma de datos

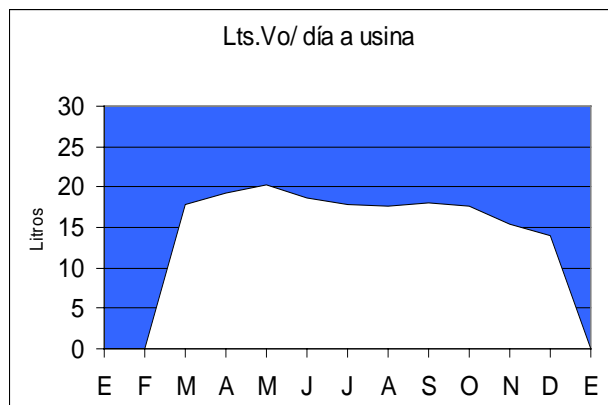
|                   | mes de parición |             |             |             |             |             |             |             |             |             |             |             | Total        |
|-------------------|-----------------|-------------|-------------|-------------|-------------|-------------|-------------|-------------|-------------|-------------|-------------|-------------|--------------|
|                   | Enero           | Febr.       | Marzo       | Abril       | Mayo        | Junio       | Julio       | Agosto      | Sept.       | Octub.      | Noviem.     | Diciem.     |              |
| ENERO             | 20.9            |             |             | 14.1        | 15.7        | 16.8        | 18.3        | 19.1        | 21.4        | 22.6        | 23.9        | 24.8        | 19.8         |
| FEBRERO           | 23.9            | 20.3        |             |             | 13.5        | 14.6        | 15.8        | 16.6        | 18.7        | 20.0        | 21.0        | 23.0        | 18.7         |
| MARZO             | 21.1            | 22.0        | 19.5        |             |             | 12.6        | 13.8        | 14.2        | 16.5        | 18.0        | 18.8        | 20.5        | 17.7         |
| ABRIL             | 19.8            | 20.8        | 21.8        | 19.6        |             |             | 12.4        | 12.8        | 14.8        | 16.3        | 17.3        | 18.7        | 17.4         |
| MAYO              | 18.7            | 19.5        | 20.8        | 22.1        | 19.9        |             |             | 12.3        | 13.6        | 15.5        | 16.2        | 17.4        | 17.6         |
| JUNIO             | 17.1            | 18.2        | 19.4        | 20.6        | 22.4        | 20.3        |             |             | 12.6        | 14.1        | 15.0        | 15.9        | 17.6         |
| JULIO             | 16.2            | 17.4        | 18.5        | 20.2        | 22.4        | 24.6        | 21.8        |             |             | 13.1        | 14.0        | 14.8        | 18.3         |
| AGOSTO            | 15.6            | 17.2        | 18.5        | 20.0        | 22.3        | 24.3        | 25.6        | 21.7        |             |             | 13.7        | 14.3        | 19.3         |
| SEPT.             | 15.8            | 17.0        | 18.6        | 20.4        | 22.7        | 24.6        | 26.0        | 26.1        | 24.2        |             |             | 14.5        | 21.0         |
| OCTUBRE           | 15.2            | 16.1        | 17.8        | 16.3        | 21.8        | 23.9        | 25.1        | 25.9        | 27.5        | 24.0        |             |             | 21.4         |
| NOVIEMBRE         |                 | 14.4        | 15.6        | 17.6        | 20.0        | 21.6        | 23.2        | 24.1        | 26.0        | 26.9        | 22.9        |             | 21.2         |
| DICIEMBRE         |                 |             | 14.3        | 16.0        | 17.9        | 19.5        | 21.1        | 22.1        | 24.3        | 25.4        | 25.6        | 22.4        | 20.8         |
| ENERO             | 20.9            |             |             | 14.1        | 15.7        | 16.8        | 18.5        | 19.1        | 21.4        | 22.8        | 23.9        | 24.8        | 19.8         |
| FEBRERO           | 23.0            | 20.3        |             |             | 13.5        | 14.6        | 15.8        | 16.6        | 18.7        | 20.0        | 21.0        | 23.0        | 18.7         |
| MARZO             | 21.1            | 22.0        | 19.5        |             |             | 12.6        | 13.8        | 14.2        | 16.5        | 18.0        | 18.8        | 20.5        | 17.7         |
| ABRIL             | 19.8            | 20.8        | 21.8        | 19.6        |             |             | 12.4        | 12.8        | 14.8        | 16.3        | 17.3        | 18.7        | 17.4         |
| MAYO              | 18.7            | 19.5        | 20.8        | 22.1        | 19.9        |             |             | 12.3        | 13.6        | 15.5        | 16.2        | 17.4        | 17.6         |
| JUNIO             | 17.1            | 18.2        | 19.4        | 20.6        | 22.4        | 20.3        |             |             | 12.6        | 14.1        | 15.0        | 15.9        | 17.6         |
| JULIO             | 16.2            | 17.4        | 18.5        | 20.2        | 22.4        | 24.6        | 21.8        |             |             | 13.1        | 14.0        | 14.8        | 18.3         |
| AGOSTO            | 15.6            | 17.2        | 18.5        | 20.0        | 22.3        | 24.3        | 25.6        | 21.7        |             |             | 13.7        | 14.3        | 19.3         |
| SEPT.             | 15.8            | 17.0        | 18.6        | 20.4        | 22.7        | 24.6        | 26.0        | 26.1        | 24.2        |             |             | 14.5        | 21.0         |
| OCTUBRE           | 15.2            | 16.1        | 17.8        | 16.3        | 21.8        | 23.9        | 25.1        | 25.9        | 27.5        | 24.0        |             |             | 21.4         |
| NOVIEMBRE         |                 | 14.4        | 15.6        | 17.6        | 20.0        | 21.6        | 23.2        | 24.1        | 26.0        | 26.9        | 22.9        |             | 21.2         |
| DICIEMBRE         |                 |             | 14.3        | 16.0        | 17.9        | 19.5        | 21.1        | 22.1        | 24.3        | 25.4        | 25.6        | 22.4        | 20.8         |
| <b>PROMEDIO</b>   | <b>18.3</b>     | <b>18.3</b> | <b>18.5</b> | <b>18.7</b> | <b>19.9</b> | <b>20.3</b> | <b>20.3</b> | <b>19.5</b> | <b>20.0</b> | <b>19.6</b> | <b>18.9</b> | <b>18.6</b> | <b>19.2</b>  |
| <b>LACTANCIAS</b> | <b>817</b>      | <b>851</b>  | <b>956</b>  | <b>926</b>  | <b>939</b>  | <b>962</b>  | <b>956</b>  | <b>1029</b> | <b>914</b>  | <b>747</b>  | <b>771</b>  | <b>817</b>  | <b>10685</b> |
| <b>TAMBOS:</b>    | <b>45</b>       | <b>47</b>   | <b>50</b>   | <b>47</b>   | <b>51</b>   | <b>51</b>   | <b>52</b>   | <b>50</b>   | <b>50</b>   | <b>49</b>   | <b>49</b>   | <b>49</b>   | <b>590</b>   |



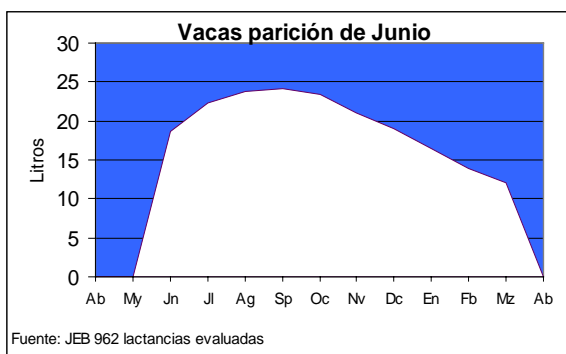
## Curvas de Lactancia por mes de parto



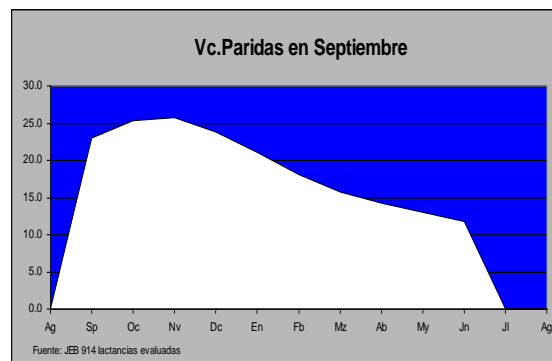
## Producc. Vc Marzo



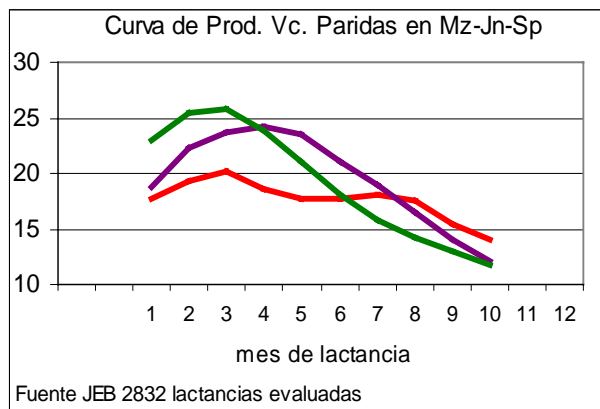
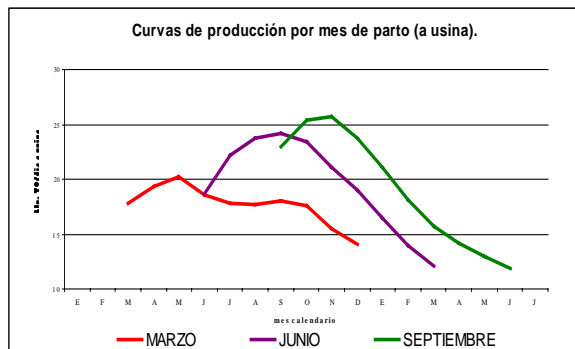
## Producc. Vc. Junio



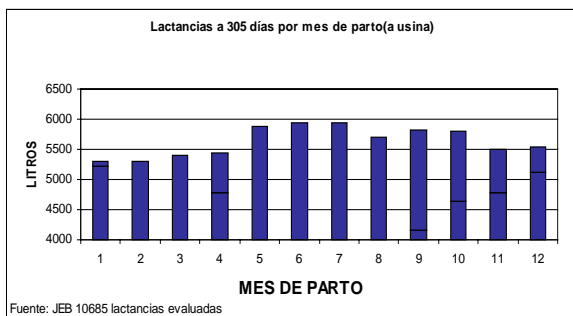
## Producc. Vc. Septiembre



### Curvas de prod. Vc paridas en :



### Producción a 305 días



### Base Vc Octubre

Partos de: **Octubre**

| Lts/día |    |             |         |
|---------|----|-------------|---------|
| Mz      | 16 | por 31 días | 496 lts |
| Ab      | 14 | por 30 días | 420 lts |
| My      | 13 | por 31 días | 403 lts |
| Jn      | 12 | por 30 días | 360 lts |

Total **1679** Lts

dividido 122 días: **13.7** lts/día

### Base Vc Abril

Partos de: **Abril**

| Lts/día |    |             |         |
|---------|----|-------------|---------|
| Mz      | 0  | por 31 días | 0 lts   |
| Ab      | 18 | por 30 días | 540 lts |
| My      | 20 | por 31 días | 620 lts |
| Jn      | 19 | por 30 días | 570 lts |

Total **1730** Lts

dividido 122 días: **14.1** lts/día

### Base vc. 22/04

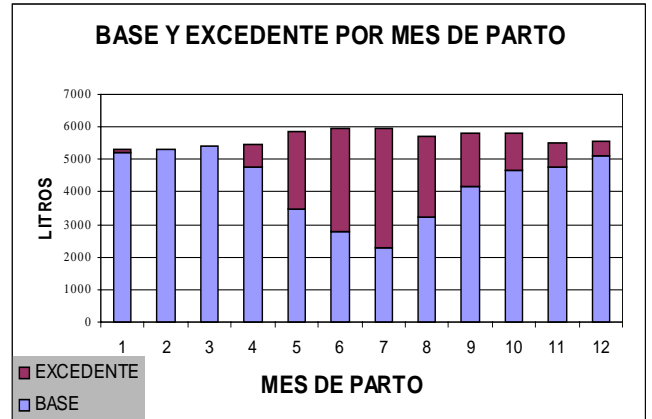
Partos del 15/4 con una semana de descarte de leche

| Lts/día |    |             |         |
|---------|----|-------------|---------|
| Mz      | 0  | por 31 días | 0 lts   |
| Ab      | 18 | por 9 días  | 162 lts |
| My      | 20 | por 31 días | 620 lts |
| Jn      | 19 | por 30 días | 570 lts |

Total **1352** Lts

dividido 122 días: **11.1** lts/día

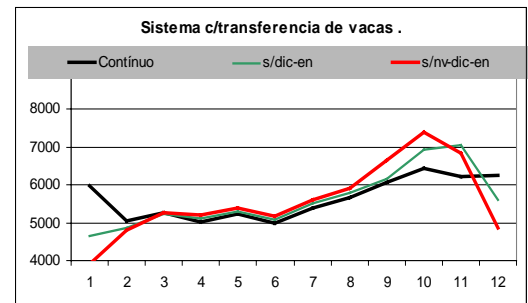
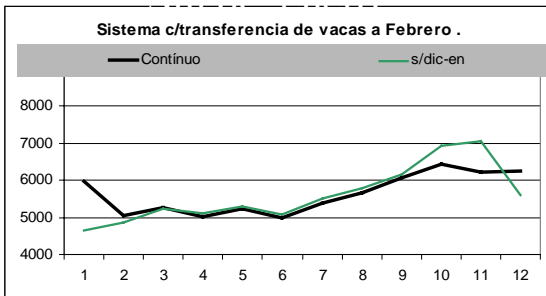
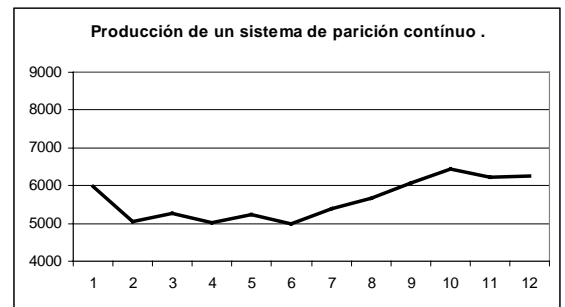
| Partos de:         | Lts.Período Base | Lts/día Mz-Jn |
|--------------------|------------------|---------------|
| <b>Octubre</b>     | <b>1679</b>      | <b>13.7</b>   |
| <b>Abril</b>       | <b>1730</b>      | <b>14.1</b>   |
| <b>15 de Abril</b> | <b>1352</b>      | <b>11.1</b>   |

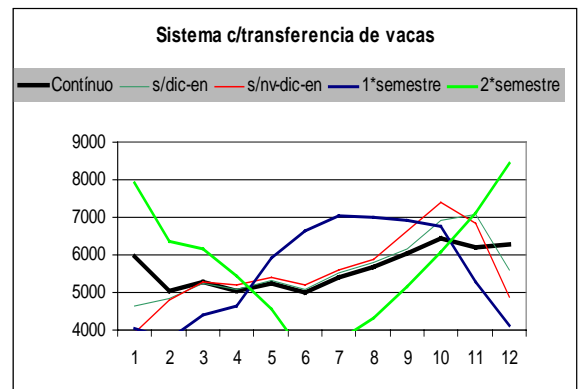
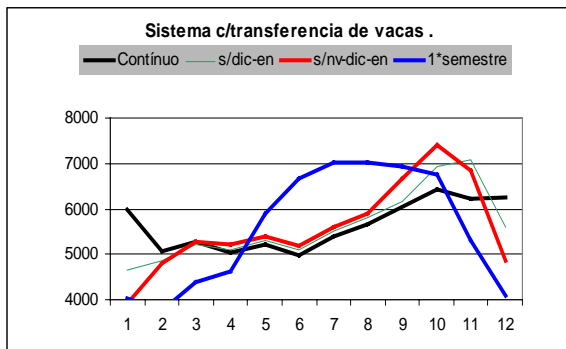


### Ingresos por mes de parto con dif. relación Base/excedente

| Mes de Parto | LECHE TOTAL | Lts. BASE | Lts. EXCED | Relación BASE / EXCEDENTE |         |         |          |      |
|--------------|-------------|-----------|------------|---------------------------|---------|---------|----------|------|
|              |             |           |            | 1 / 1                     | 1,3 / 1 | 1,5 / 1 | 1,75 / 1 |      |
| Enero        | 5310        | 5219      | 91         | 5310                      | 5977    | 6336    | 6688     | 7054 |
| Febrero      | 5291        | 5291      | 0          | 5291                      | 5979    | 6349    | 6720     | 7090 |
| Marzo        | 5400        | 5400      | 0          | 5400                      | 6102    | 6480    | 6858     | 7236 |
| Abril        | 5443        | 4776      | 667        | 5443                      | 5977    | 6265    | 6506     | 6840 |
| Mayo         | 5876        | 3492      | 2384       | 5876                      | 6020    | 6098    | 6008     | 6253 |
| Junio        | 5941        | 2798      | 3143       | 5941                      | 5896    | 5872    | 5628     | 5824 |
| Julio        | 5939        | 2293      | 3646       | 5939                      | 5763    | 5668    | 5319     | 5479 |
| Agosto       | 5695        | 3219      | 2476       | 5695                      | 5793    | 5944    | 6222     | 6618 |
| Septiembre   | 5819        | 4154      | 1665       | 5819                      | 6143    | 6317    | 6374     | 6665 |
| Octubre      | 5799        | 4648      | 1151       | 5799                      | 6254    | 6498    | 6663     | 6988 |
| Noviembre    | 5510        | 4773      | 737        | 5510                      | 6035    | 6317    | 6548     | 6882 |
| Diciembre    | 5541        | 5119      | 422        | 5541                      | 6152    | 6480    | 6780     | 7138 |

- Tercio superior
- Tercio inferior





## I.E. Partos según mes de Parición

### Int. Parto-concepción según mes de parto

|                   | En.  | Fb.  | Mz.  | Ab   | My   | Jn   | Jl   | Ag   | Sp   | Oc   | Nv   | Dc.  | Total |       |
|-------------------|------|------|------|------|------|------|------|------|------|------|------|------|-------|-------|
| Partos evaluados: | 429  | 548  | 743  | 779  | 714  | 723  | 372  | 459  | 565  | 525  | 600  | 446  | 6903  |       |
| IPC               | 118  | 123  | 113  | 115  | 112  | 106  | 122  | 117  | 122  | 118  | 132  | 124  | 118   | días  |
| IEP (meses)       | 13.2 | 13.3 | 13.0 | 13.1 | 13.0 | 12.8 | 13.3 | 13.1 | 13.3 | 13.2 | 13.6 | 13.4 | 13.2  | meses |

### ¿Cómo se comportarían diferentes esquemas de pariciones?

Orden: Ingresos totales

| Modelo                        | Ingresos totales | Lts.año | Lts.base | Ingreso por Lt |
|-------------------------------|------------------|---------|----------|----------------|
| Estacionado Fb-Mz-Ab-My-Jn-Jl | 34246            | 2795    | 6967     | 1.23           |
| Estacionado Jl-Ag-Sp-Oc-Nv    | 34518            | 2876    | 6157     | 1.20           |
| Estacionado Fb-Mz             | 34743            | 2672    | 9558     | 1.30           |
| Estacionado Oc-Nv             | 34899            | 2827    | 7986     | 1.23           |
| Continuo                      | 35592            | 2816    | 6987     | 1.26           |
| 50% Fb-Mz 50% Sp-Oc           | 35943            | 2788    | 8445     | 1.29           |
| 30% Fb-Mz 70% Sp Oc           | 36127            | 2834    | 8000     | 1.27           |
| Estacionado Sp-Oc por 1,3 Vc  | 45824            | 3775    | 9532     | 1.21           |

Relación de precios 1,3/ 1

### Características de Lactancias según su mes de Parición

| Mes de parición | Picos | Lactancia a 305 días | Precio por Lt. |
|-----------------|-------|----------------------|----------------|
| Enero           | B     | B                    | A              |
| Febrero         | B     | B                    | A              |
| Marzo           | B     | B                    | A              |
| Abril           | B     | B                    | M              |
| Mayo            | M     | M                    | B              |
| Junio           | M     | A                    | B              |
| Julio           | A     | A                    | B              |
| Agosto          | A     | A                    | B              |
| Septiembre      | A     | A                    | M              |
| Octubre         | A     | M                    | M              |
| Noviembre       | M     | M                    | M              |
| Diciembre       | M     | M                    | A              |

## Algunas Conclusiones

Algún día lograremos acuerdos de Producción  
entre la Industria y el Tambo.

Espero haber colaborado  
en "el saber" cómo llevarlo adelante

Muchas Gracias