


China, alimentos y comercio.

¿Qué rol para la Argentina?

Simposio "Argentina y Asia en 2030: Estrategias en los Agronegocios para un mundo en desarrollo" Abril 2014



“Cuando China, un mercado diez veces mayor que Japón comience a importar, no habrá granos suficientes en el mundo para satisfacer esa necesidad ...”

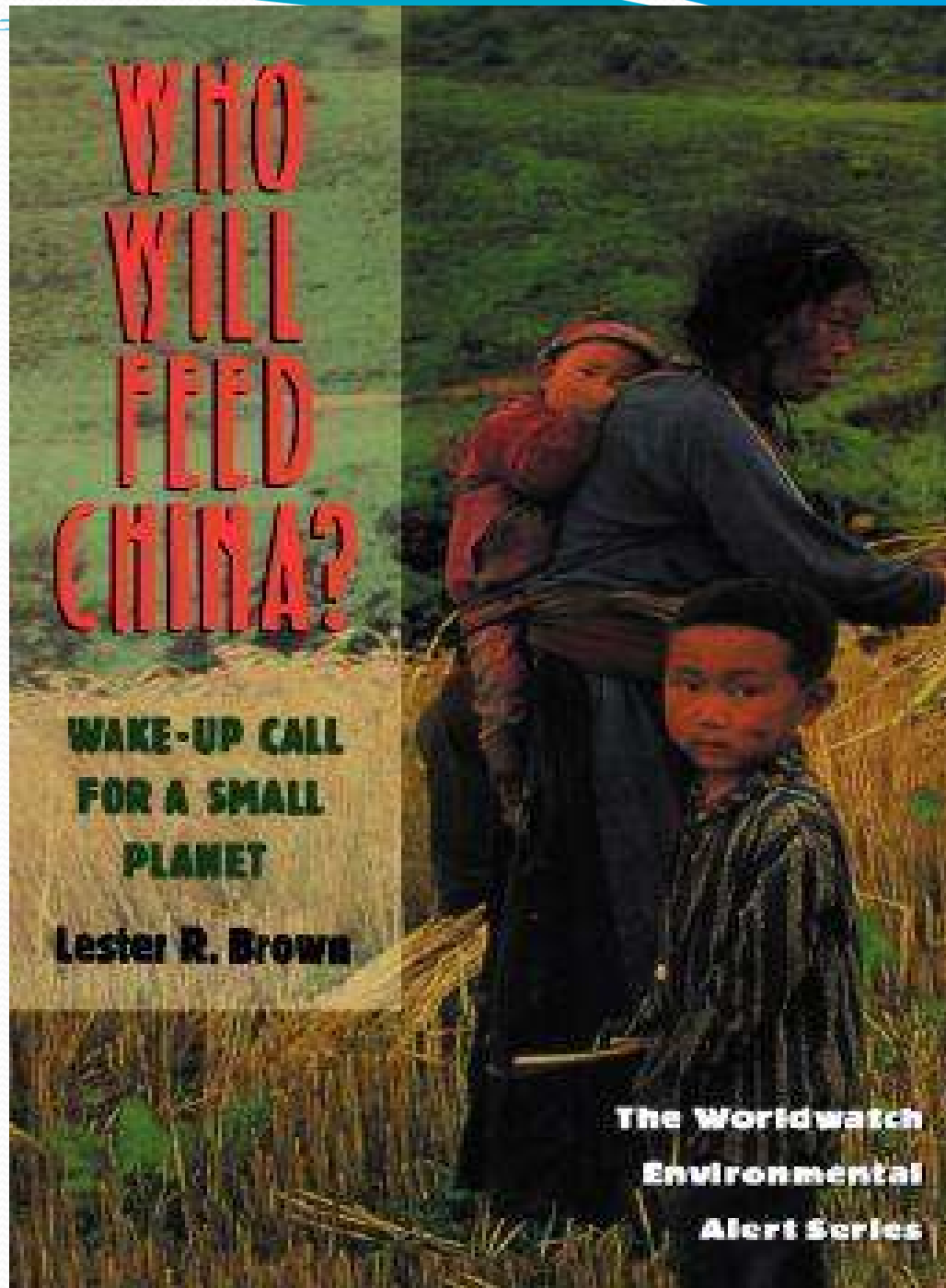
Lester Brown, 1995.

WHO WILL FEED CHINA?

**WAKE-UP CALL
FOR A SMALL
PLANET**

Lester R. Brown

**The Worldwatch
Environmental
Alert Series**

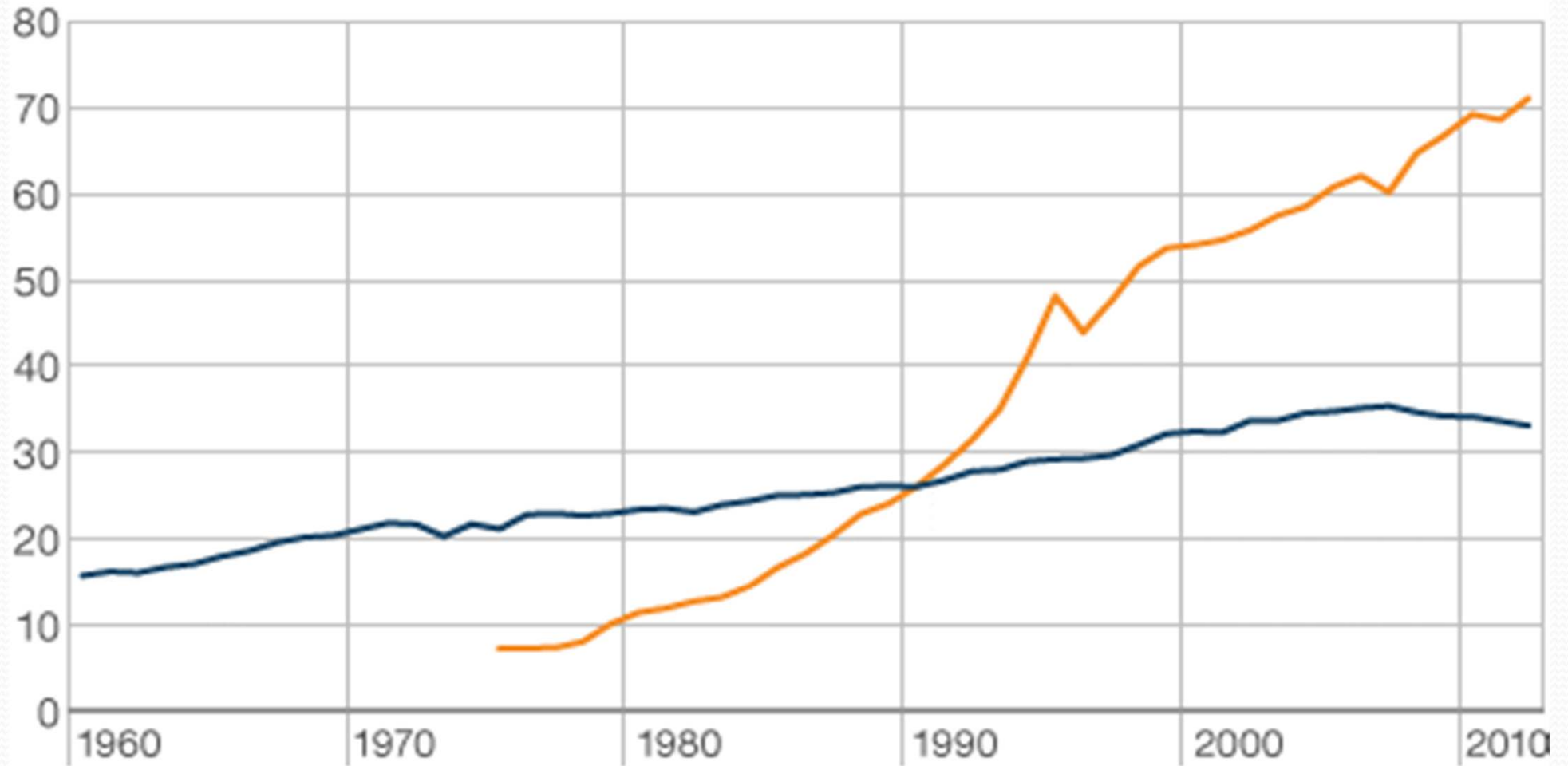




Meat consumption in US and China

Million metric tons

— US — China

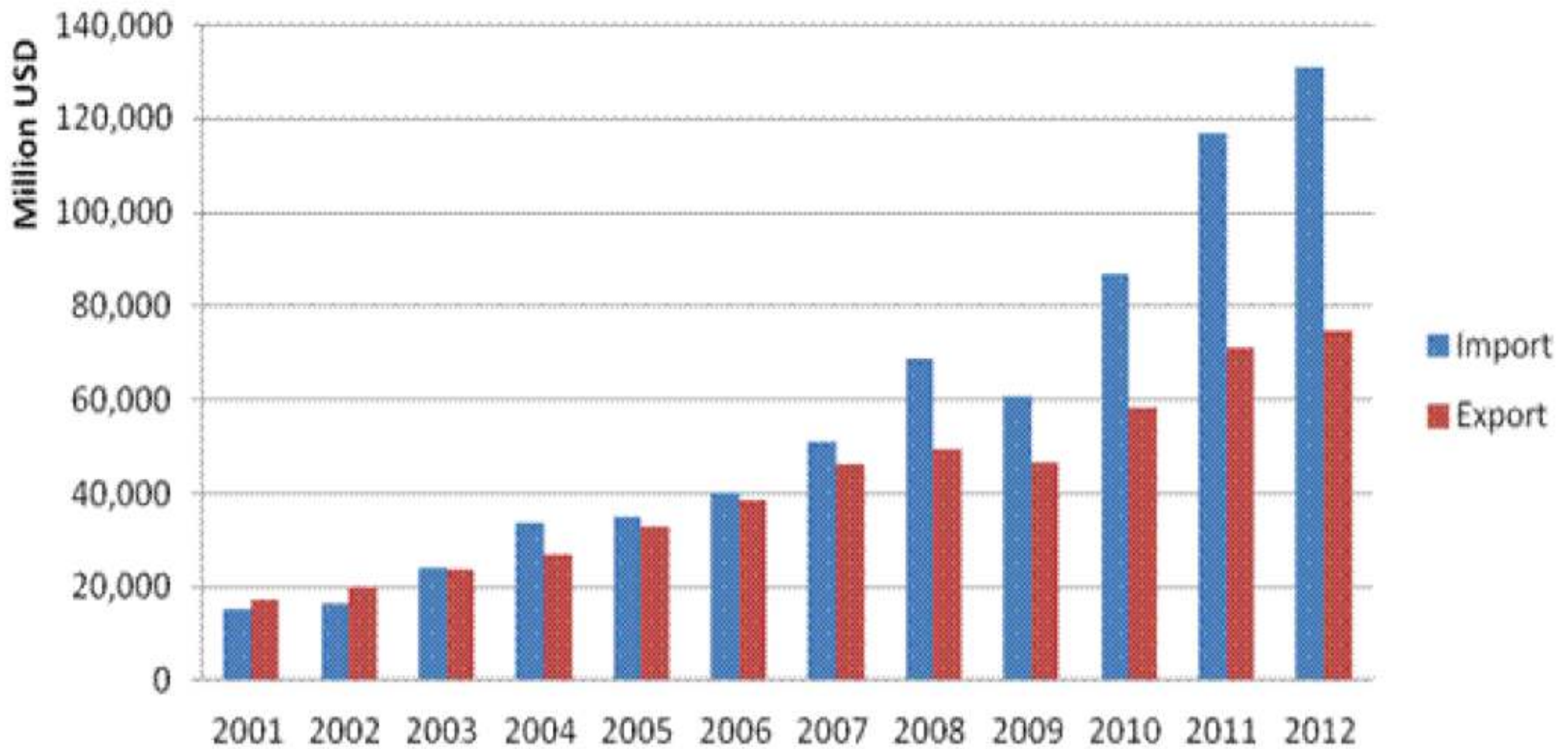


Source: USDA



Las claves: seguridad
y sanidad

China Agricultural Trade in 2001-2012



Source: China Customs

China: Nivel de autosuficiencia previsto

Sheet 1



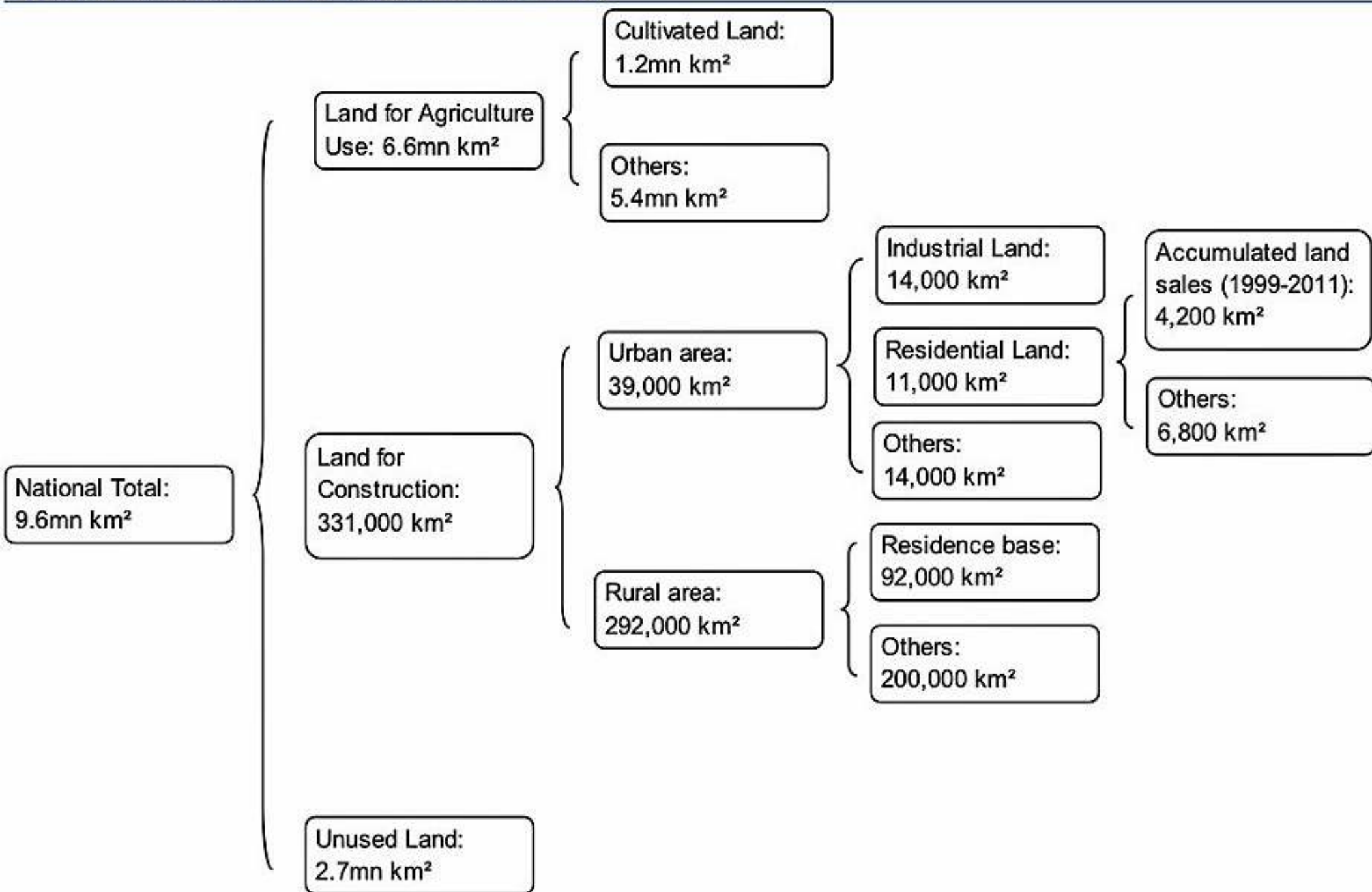
La tendencia de suma de Self para Year año. El color muestra detalles acerca de Product. La vista se filtra en Product, lo que conserva Coarse grains, Milk products, Oilseeds y Wheat.

Proyecciones OECD FAO 2013

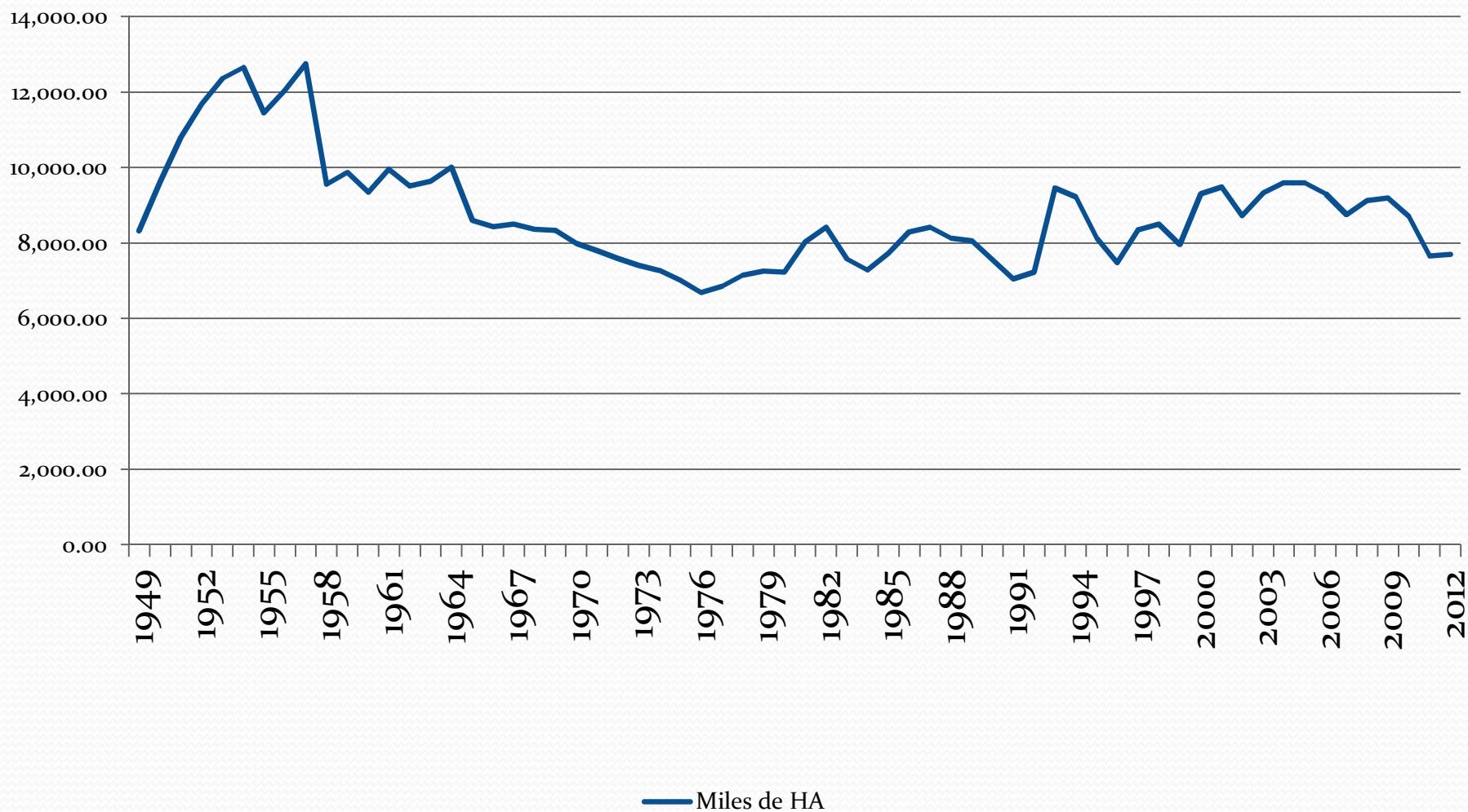
China:Proyecciones de importación de productos seleccionados

		2010- 2012 est.	2013	2014	2015	2016	2017	2018	2019	2020	2021	2022
Trigo	Tm	2,1	1,7	2,1	2,4	2,5	2,6	2,4	2,5	2,6	2,6	2,8
Granos gruesos	Tm	5,4	6	6,6	7,3	8	9	9,7	10,4	11,2	12,2	13,2
Semillas oleag.	Tm	58,9	65,1	67,1	70	71,6	73	74,5	75,8	78,2	80,6	82,8
Alimentos proteicos	Tm	1,6	1,3	1,6	2,5	2,9	3,5	3,9	4,4	5	5,4	5,8
Aceites vegetales	Tm	9,1	10,1	9,5	10,6	10,4	10,6	10,7	10,9	10,9	11,2	11,4
Carne vacuna y ovina	tm epr	0,1	0,1	0,1	0,1	0,1	0,1	0,1	0,2	0,2	0,2	0,2
Carne porcina	tm epr	0,5	0,6	0,6	0,6	0,7	0,7	0,7	0,7	0,7	0,7	0,7
Carne aviar	Tm	0,5	0,5	0,5	0,5	0,5	0,5	0,5	0,5	0,5	0,5	0,6
Pescados	Tm	3,2	3,6	3,9	4	3,6	4	4,1	4,2	4,3	4,5	4,4
Manteca	kt	35,8	49,8	50,5	52,6	54,2	53,5	53,9	53,8	54,4	55	56,3
Quesos	kt	30,1	43,6	47,8	53,7	59,9	64,7	68,9	75,2	82,1	90,9	102,3
Leche en polvo entera	kt	349,3	406,2	426,7	435,8	442,1	430,3	430,2	431,7	440	448,9	464,7

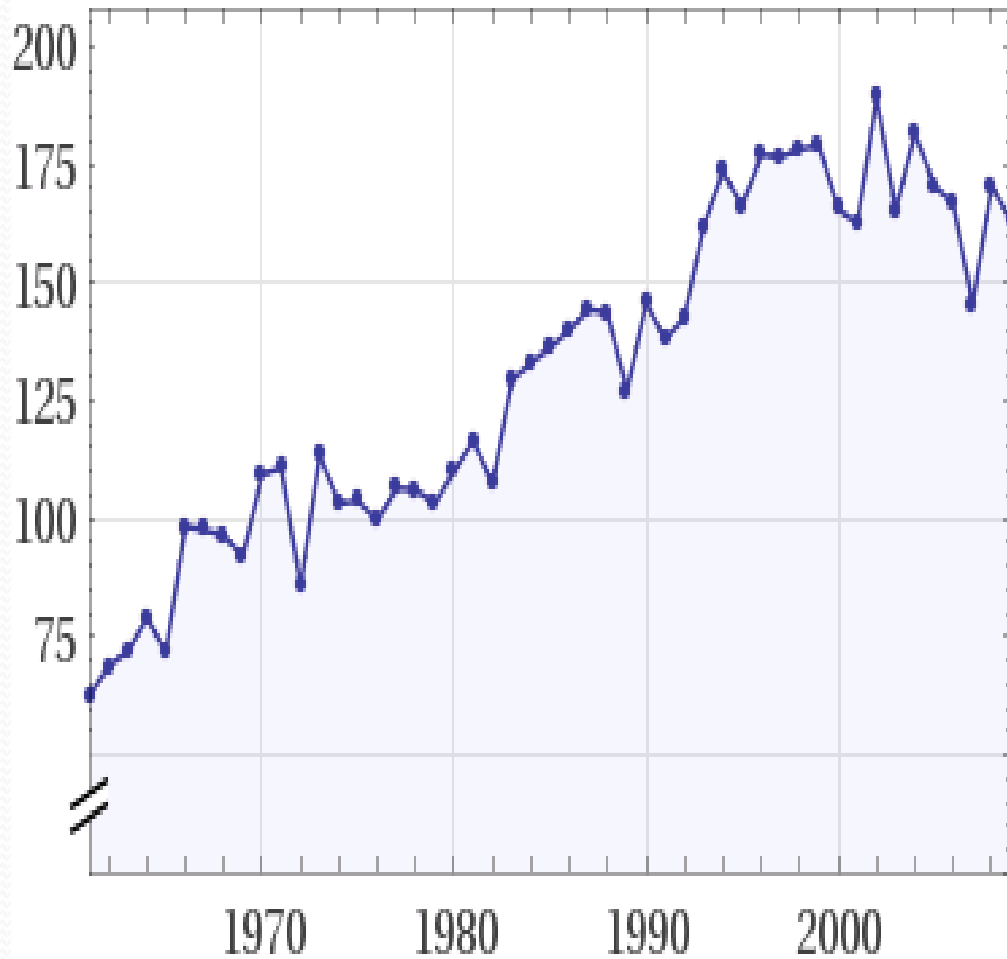
Chart 1: Breakdown of land use in China



Soja: evolución del área cultivada



Productividad soia



(from 1961 to 2009)

(in grams per square meter year)



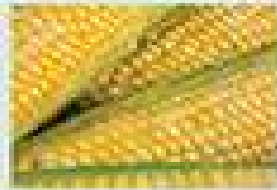


La fábrica que se ve atrás, usa plomo

Exhibit 2. Shifting Diets in China Will Exacerbate Water Shortages



Soybeans
1,662 liters of
water per kilogram



Corn
762 liters of
water per kilogram



Alfalfa
1,550 liters of
water per kilogram



Pork
5,508 liters of
water per kilogram



Chicken
2,219 liters of
water per kilogram



Beef
14,191 liters of
water per kilogram

Consumption of meat will require up to 10 times the water resources needed to support a grain-based diet

Sources: M.M. Mekonnen and A.Y. Hoekstra, "The green, blue and grey water footprint of crops," www.waterfootprint.org; Peter Gleick, *The World's Water 2008-2009*, www.worldwater.org.

Note: Water consumption figures represent U.S. averages.





Live animals
other than
animals of
division 03
0%

Meat and fish and
preparations thereof
2% 1%

Crustaceans,
and preparations thereof
1%

Dairy products
and preparations thereof
1%

Cereals and cereal
preparations
1%

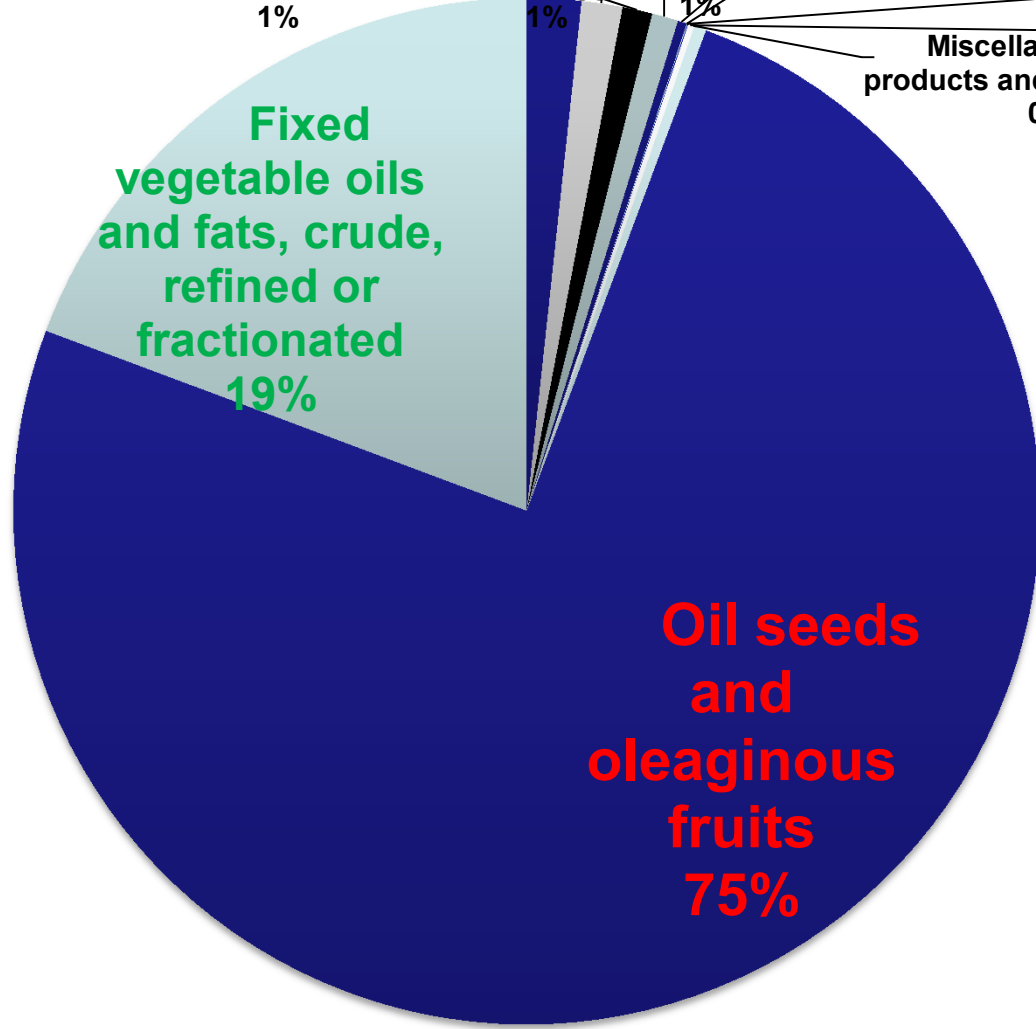
Beverages
0%

Vegetables, sugar
fruits and honey
0% 0%

Coffee, tea, cocoa,
spices, and
manufactures thereof
0%

Feedstuff for
animals (excluding
unmilled cereals)
0%

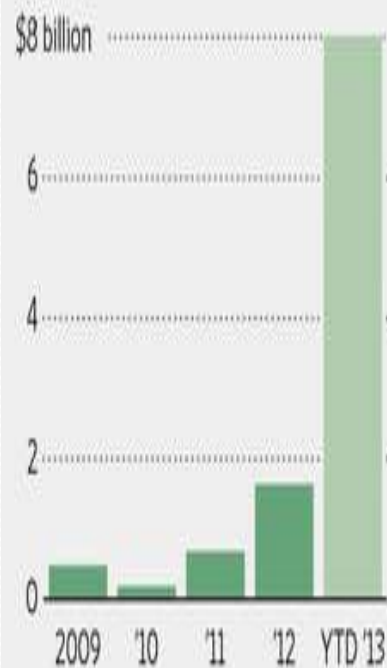
Miscellaneous edible
products and preparations
0%



Una lista de compras simple...

Bill of Fare | Chinese food companies' overseas acquisitions

Outbound food and beverage deals



Five largest food and beverage deals in the past five years

Announced	Target (stakes)	Target country/ economy	Acquirer	Deal value ¹ in millions of dollars
May 29, 2013*	Smithfield Foods	U.S.	Shuanghui International	\$4,874
May 3, 2012	Weetabix (60%)	U.K.	Bright Food	1,167
June 24, 2013	Copeinca ASA (83%)	Peru	China Fishery Group	656
Sept. 26, 2012	Hop Hing Group (95%)	Hong Kong	Queen Board	448
Aug. 18, 2011	Manassen Foods Australia (75%)	Australia	Bright Food	418

* Pending †Excluding debt

Source: Dealogic

The Wall Street Journal



Nidera is around \$4 billion, according to people familiar with the matter, so the value of Cofco's stake is around \$1.2 billion.

China's Cofco, Hopu to Buy 51% Stake
in Noble Agriculture Unit
Consortium to Pay \$1.5 Billion and
Form Joint Venture



Global 500

Rank 2011 : 366

Employees: 88,508

Address: 8 Chao Yang Men South St.

Beijing 100005

Country: China

Website: www.cofco.com

\$ millions

Revenues 26,468.8

Profits 800.3

Assets 35,298.6

**\$34 mil millones
en 2012**

	la Argentina		Del Mundo		Desvío AR respecto a perfil general	Participación AR como proveedor
Total all products	6.560.806	100,0%	1.818.199.228	100,0%		0,4%
Food and live animals	260.644	4,0%	35.261.570	1,9%	2,0%	0,7%
Live animals	16	0,0%	499.523	0,0%	0,0%	0,0%
Meat and meat preparations	83.924	1,3%	4.112.458	0,2%	1,1%	2,0%
Dairy products and birds' eggs	63.354	1,0%	3.256.787	0,2%	0,8%	1,9%
Fish, crustaceans, molluscs and preparations thereof	46.355	0,7%	5.659.827	0,3%	0,4%	0,8%
Cereals and cereal preparations	40.571	0,6%	5.188.689	0,3%	0,3%	0,8%
Vegetables and fruits	14.058	0,2%	6.933.816	0,4%	-0,2%	0,2%
Sugar, sugar preparations and honey	1.211	0,0%	2.576.169	0,1%	-0,1%	0,0%
Coffee, tea, cocoa, spices, and manufactures thereof	1.152	0,0%	997.992	0,1%	0,0%	0,1%
Feedstuff for animals (excluding unmilled cereals)	10.003	0,2%	3.232.329	0,2%	0,0%	0,3%
Miscellaneous edible products and preparations	1	0,0%	2.803.979	0,2%	-0,2%	0,0%
Beverages	18.855	0,3%	3.086.912	0,2%	0,1%	0,6%
Oil seeds and oleaginous fruits	3.688.380	56,2%	37.743.033	2,1%	54,1%	9,8%
Fixed vegetable oils and fats, crude, refined or fractionated	948.590,38	14,5%	11.991.558,46	0,7%	13,8%	7,9%
Alimentos y bebidas exc. para animales	269.496	4,1%	35.116.152	1,9%	2,2%	0,8%

喜迎中国共产党第十八次全国代表大会



中国检验检疫服务网

China Inspection and Quarantine Service



国家质量监督检验检疫总局

General Administration of Quality Supervision, Inspection and Quarantine of the People's Republic of China



中华人民共和国卫生部

MINISTRY OF HEALTH OF THE PEOPLE'S REPUBLIC OF CHINA



中华人民共和国商务部

Ministry of Commerce of the People's Republic of China